

WHERE SCIENCE MEETS COSMOS

THE COURSE OF SPACE TECHNOLOGY

SURVIVAL GUIDE
GDAŃSK SUMMER COURSE 2022





Cześć BESTie!

Are you interested in space technology?

Are you ready to explore Polish culture in a BEST spirit way?

Are you ready for the most exciting event of summer?

3 times yes? You came to the right place!



Here is a bunch of useful information to make your stay in Poland unforgettable

(AND WE ARE SURE IT WILL BE!)

✦ GENERAL INFORMATION AND TIPS

- About Poland and Gdansk
 - Some Polish to get by
 - Fun and useful facts
 - Money, prices, visa and covid stuff
-

✦ HOW TO GET TO GDAŃSK?

- By plane
 - By train
 - By bus
 - By rocket
-

✦ ORGANIZE YOUR DEPARTURE

- What to bring
- Useful contacts

ABOUT POLAND



Area: : 312 679 km²



Currency: złoty (PLN)



Population: 37.95 million people



Life expectancy:
females 81.9,
males 73.9



Capital: Warszawa



Electricity: 230V,
50Hz, e-type socket

ABOUT GDAŃSK



POLITECHNIKA GDAŃSKA

Gdansk University of Technology where our classes will be happening.



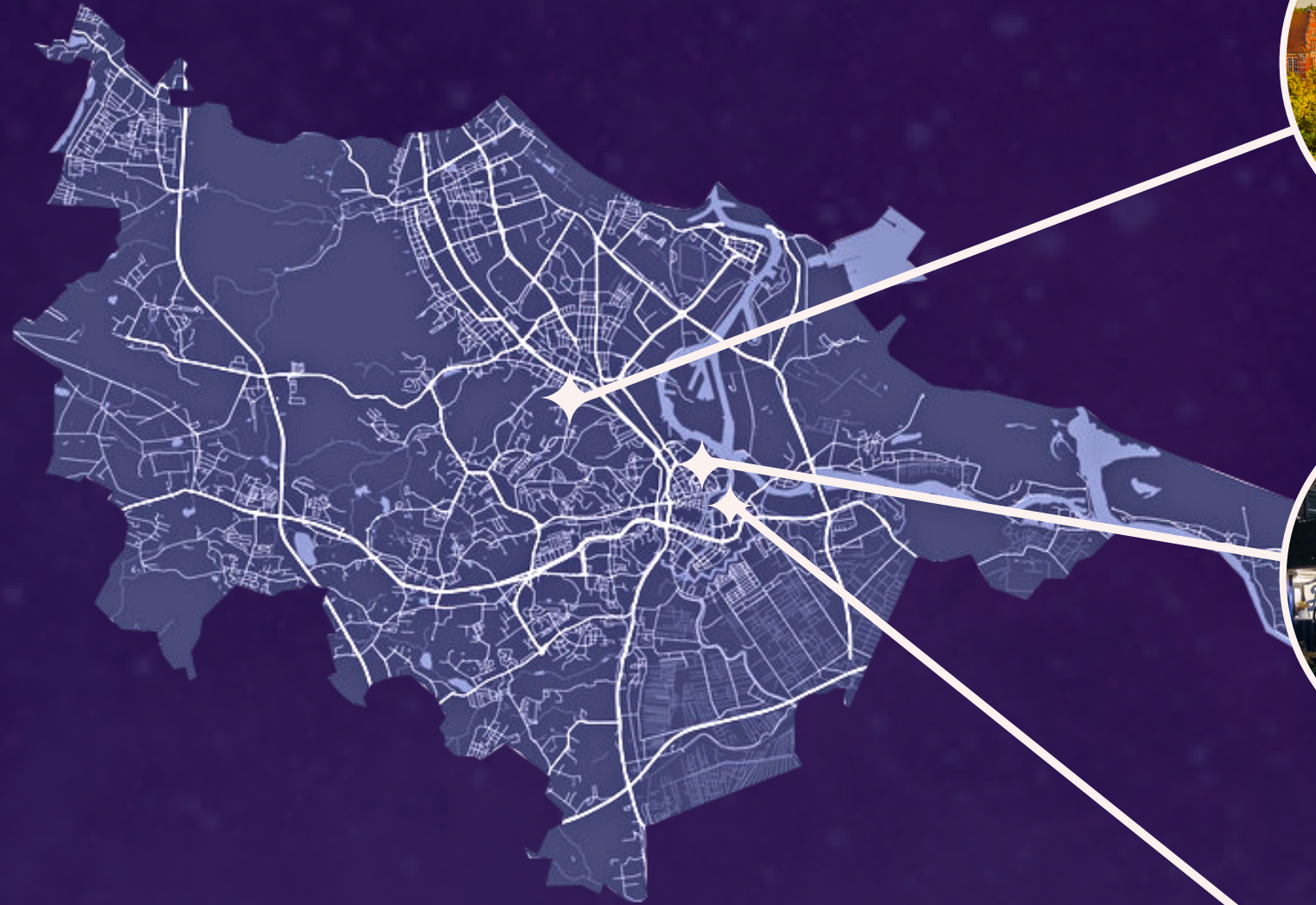
ELEKTRYKÓW

Electricians Street is located in the heart of Gdansk Shipyard where you can find a space to party, drink a beer or eat in a food trucks. It works as a powerful magnet for people.



OLD TOWN

Main streets of Gdansk, wait for the Pub Crawl there!



ABOUT GDAŃSK



BEACH

Gdansk has multiple beaches where you can swim and chill during summer.



PARK OLIWSKI

One of the largest parks in Gdansk. You can chill there while listening to special sound caves and in a greenhouse with many different palm trees and tropical flowers!



OLIVIA BUSINESS CENTRE

Financial and business centre of Gdansk. In the highest building in our city there is a restaurant with a beautiful view.

SOME POLISH TO GET BY:



ENGLISH

YES

NO

HELLO

CHEERS!

BEER

VODKA

COFFEE

POLISH

TAK

NIE

CZEŚĆ

NA ZDROWIE!

PIWO

WÓDKA

KAWA

PRONUNCIATION

[tac]

[nye]

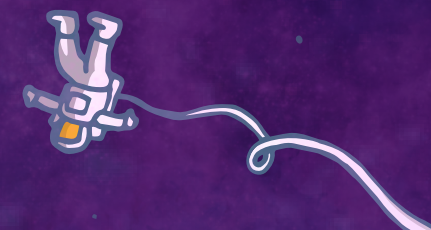
[cheshts]

[na stro-vie!]

[pivo]

[voodka]

[cava]



SOME POLISH TO GET BY:



ENGLISH

How much does it cost?

How are you?

You are so pretty!

I don't understand.

I love you.

Cosmos/Rocket

Goodbye!

POLISH

Ile to kosztuje?

Jak się masz/Co tam?

Jesteś piękna.

Nie rozumiem.

Kocham Cię.

Kosmos/Rakieta

Pa!

PRONUNCIATION

[leel-e to koshtooye?]

[yak shie mash]/[co tam]

[yestesh pien-kna]

[nye rozumyem]

[koham tchie]

[cosmos/racketal]

[pa]

There is one more mandatory word that we will teach you once you come here!

FUN AND USEFUL FACTS:

- Polish alphabet consists of 32 letters (English of 26)
- Poland has the world's first upside down house
- Europe's biggest animals live in Poland - bison's weight over 600kg
- Poland's constitution was the 2nd in the world
- Traditional Polish last names change depending on the sex
- Poland is world's biggest exporter of Amber
- You get awarded for being married 50 years in Poland
- Poles kill dolls every spring (but don't worry, we will explain later :))
- The geographical center of Europe is located in Poland, in the village called Piątek (Friday)
- It's rude for men to wear hats indoors; the rule applies specifically to eating and staying in public places like the church.
- There is a Wild Pigs Beach in Poland. You can literally feed the boars there.
- Polish engineer invented the Modern Kerosene lamp
- Latex condoms were invented by a Pole
- The 1st floor is regarded as floor "0"



MONEY, PRICES AND COVID INFO:

Polish currency is PLN (złote), you can use credit card almost everywhere, but it's better to have some cash with you just in case.

PRICES

1 € ≈ 4,53 PLN

Food on COURSE	FREE
Water	1,5 PLN
Coffee in a restaurant	10 PLN
Bus/Train ticket	1,9 PLN
Beer in the store	3-5 PLN
Beer in the bar	10 PLN
Bottle of vodka	25-35 PLN
Sandwich	7 PLN
Pack of chips	4 PLN
Pack of cigarettes	15 PLN
Restaurant dinner	30-70 PLN





MONEY, PRICES AND COVID INFO:

Fine for drinking in public places

100 PLN

Night in jail

300 PLN

Condoms (pack)

15 PLN

COVID-19 STUFF:

Restrictions in Poland change very often, that's why it's the best to follow them here: <https://reopen.europa.eu/>

If you have any problems or questions,
don't hesitate to text us!



HOW TO GET TO GDAŃSK

Best option to travel to Gdansk from abroad is by plane to Gdansk Airport or other airports in Poland, and then taking the train directly to Gdansk (more details below).

In Gdansk, the meeting point for arrival will be **Gdansk University of Technology** (Politechnika Gdańska), Gabriela Narutowicza 11/12, 80-233 Gdansk.



BY ROCKET!

BY PLANE



Gdansk Lech Walesa Airport is located 12 km west from the city centre and operates flights from many Polish and European cities.

Among the others, following airlines offer service from/to Gdansk Airport:

Wizz Air, Ryanair, Lufthansa, Polish Airlines LOT, SAS, Finnair, KLM, Norwegian.

For more info go to: <http://www.airport.gdansk.pl/>



How to get **from the airport** to our awesome University: **BY BUS**


Leave the airport to the bus stop
Wrzeszcz PKP direction


Take **110, 122 or N3** line

Leave at **Galeria Bałtycka bus stop** and go to the **tram stop**

Leave at **Politechnika stop**



Buy an **one hour ticket** at the ticket machine or in jakdojade app 

SCAN TICKET once you enter the bus 

Take 2, 5, 6, 9 or 12 line
towards Gdańsk Główny

We will be waiting for you there!



EXAMPLE OF A ROUTE

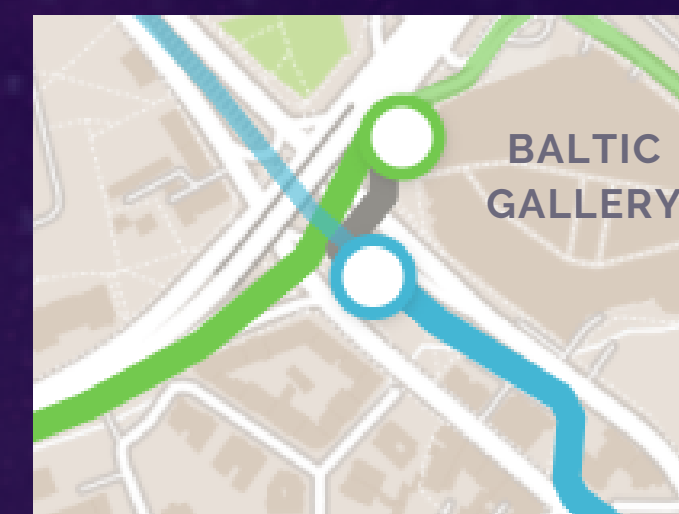
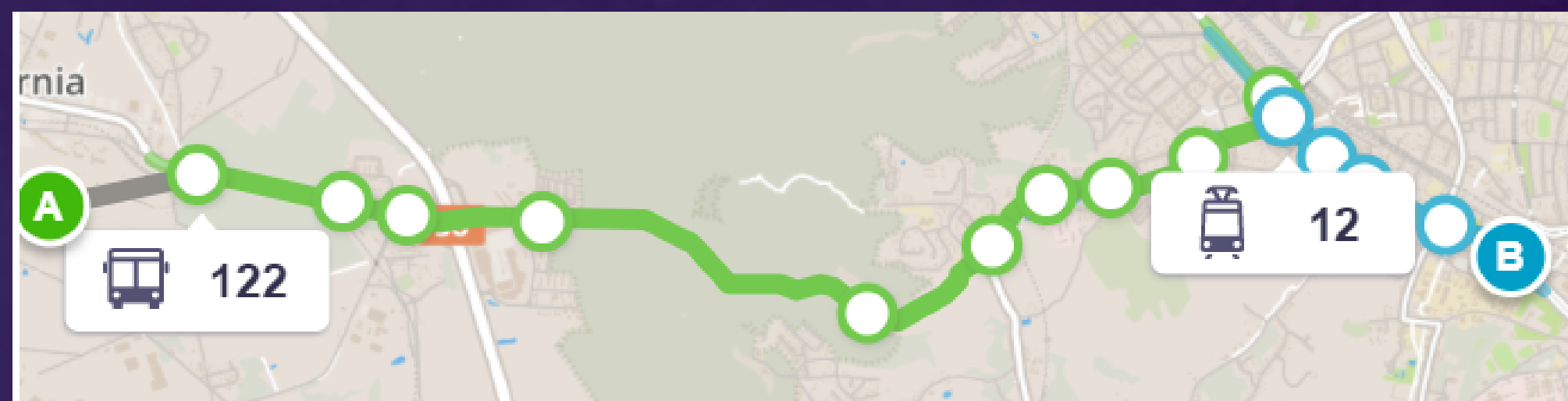
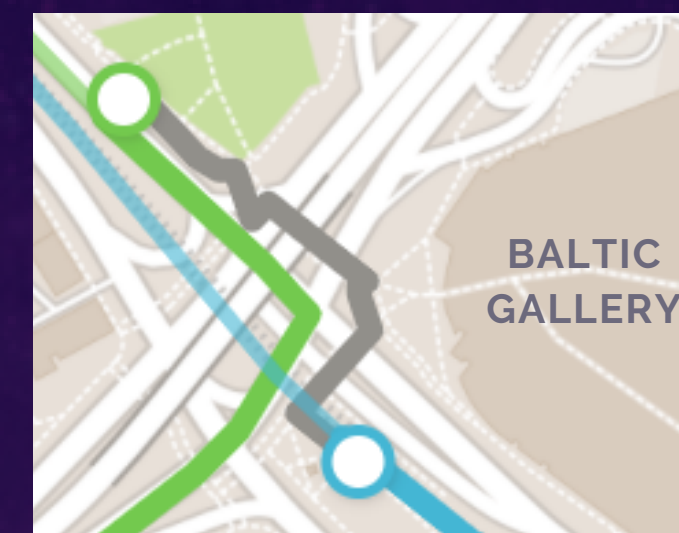
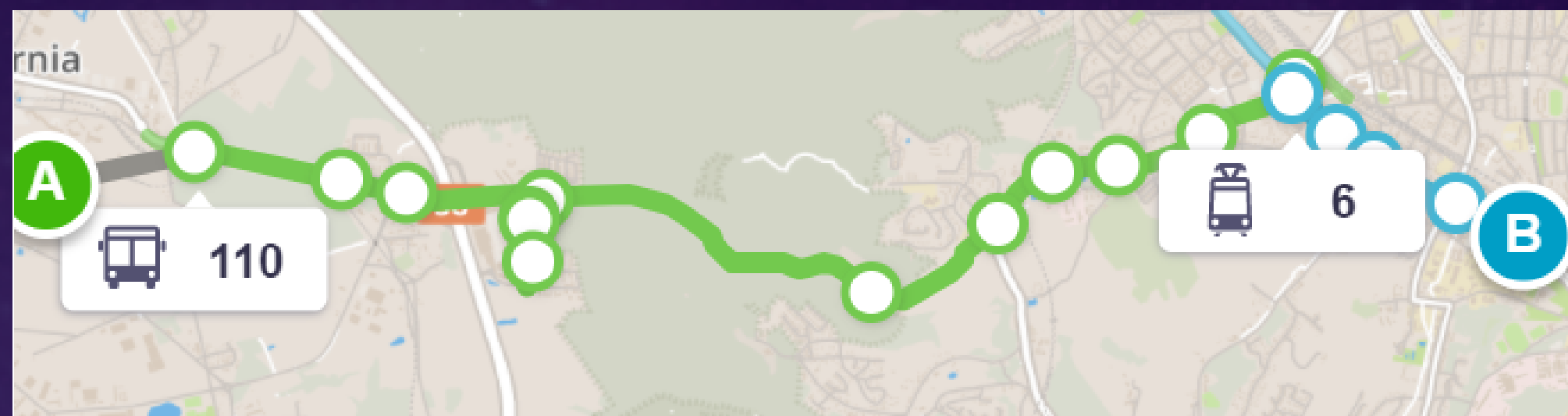


A - AIRPORT, B - POLITECHNIKA GDAŃSKA

BUS ROUTE

CHANGE AT A STOP - BALTIC GALLERY 🚶

TRAM ROUTE



✦ ✦ How to get **from the airport** to our awesome University:

BY PKM

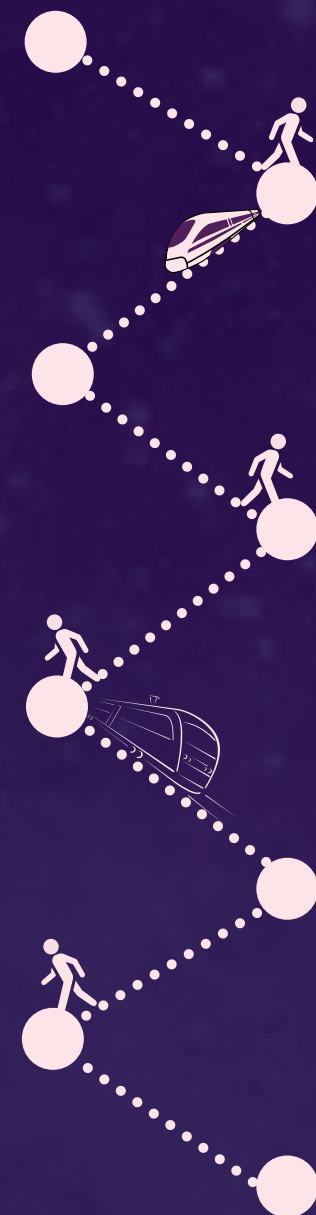
Pomeranian Metropolitan Railway

Leave the airport to the train station **Wrzeszcz PKP direction**

Leave at **Wrzeszcz PKP train station** and go to **tram stop**

Take 2, 5, 6, 9 or 12 line **towards Gdańsk Główny**

Leave at **Politechnika stop**



Get into a **train** and purchase a ticket **from the conductor**



Buy a **ticket** at the ticket machine or in jakdoajde app



SCAN TICKET once you enter the tram!



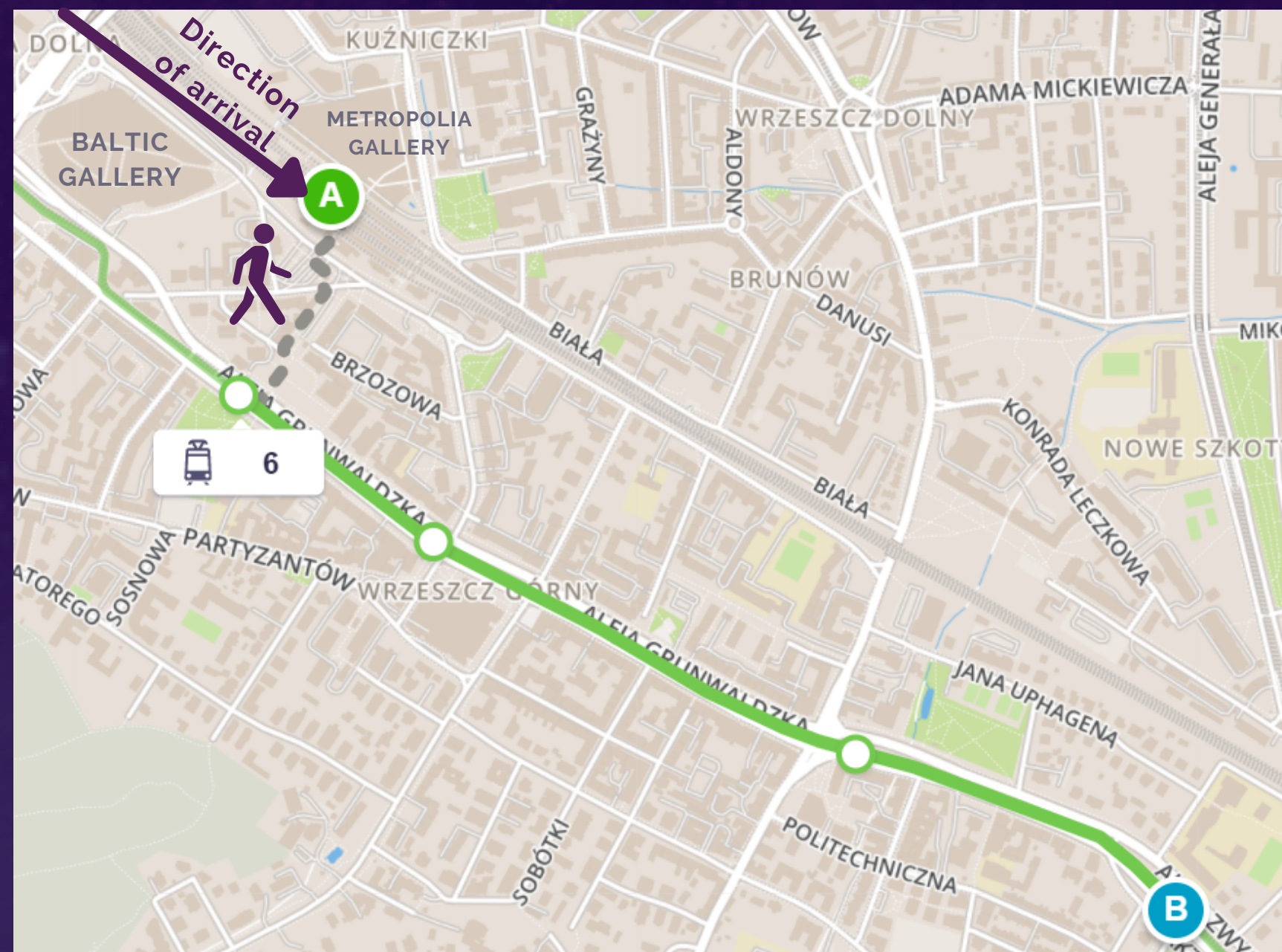
We will be waiting for you there!



CHANGE FROM PKM TO TRAM



A - GDAŃSK WRZESZCZ,
B - POLITECHNIKA
GDAŃSKA



The best way

NOT TO GET LOST

is to download the “jak dojadę” app, it’s really easy to use and you will have all the possible connections there.

Another way to get to the Uni:

- Taxi (50-60PLN),
- Uber/Bolt (30-40PLN),
- Traficar (rental car for hours).



BY TRAIN



Gdansk has direct railway connections with all the biggest Polish cities, such as Wroclaw, Krakow, Katowice, Lodz, Warsaw, Poznań and Szczecin.

For the timetables and further information go to:
<https://www.intercity.pl/en/>

The sooner you book your ticket the cheaper price you'll get.

Booking starts 30 days before your travel date.
Remember that with a valid student card (ISIC)
you can get a 51% discount.



BY BUS (FlixBus):



Taking FlixBus is **the cheapest** way to get to Gdansk from other polish cities. For further information go to:
<https://global.flixbus.com/bus/gdansk>

Buses are comfortable and equipped with air conditioning and Wi-Fi but they take longer than trains.



If you have any problems or questions,
don't hesitate to text us!



WHAT TO BRING



Valid ID/ Passport



Visa if needed



Insurance



Student card (erasmus too)



Money and credit card



Your personal medication



Food and drinks for
International Evening



Earplugs. Just in case your
roommate snores

HERE IS OUR CONTACT if you have any questions!
Don't hesitate to text us!



FILIP SOŁTYS

MAIN ORGANIZER

BEST Summer Course 2022
filip.soltys@best.gdansk.pl
+48 531 707 014



AGNIESZKA KWIATEK

PARTICIPANTS RESPONSIBLE

BEST Summer Course 2022
agnieszka.kwiatek@best.gdansk.pl
+48 579 063 090



GDAŃSK IS WAITING FOR YOU!